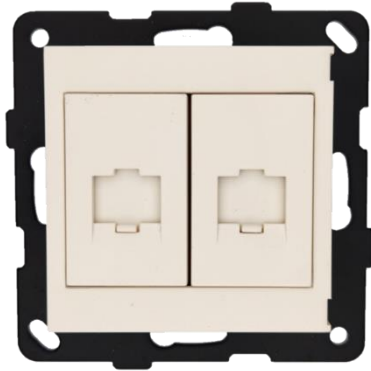


Product Code	Description
JC822PC-W	2 Gang RJ45 Cat 6 Data Socket Outlet



JC822PC-W-LWH



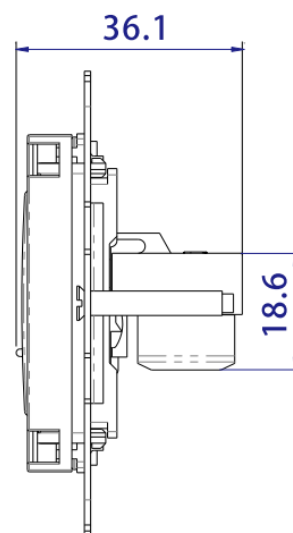
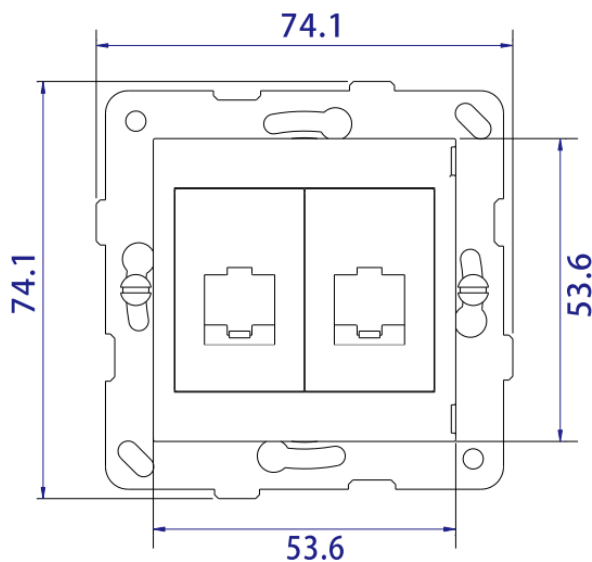
Product back view

Technical Specification

- With shutter dust cover
- Punch down termination
- Compatible CAT6 jack:
RJD-60U8883-05B
(Unshielded, Dual IDC Jack, White)
-support both T568A & T568B wiring
- Fix Centre: 60.3 mm
- Fix Screw: M3.5 x 0.6 x 25mm±

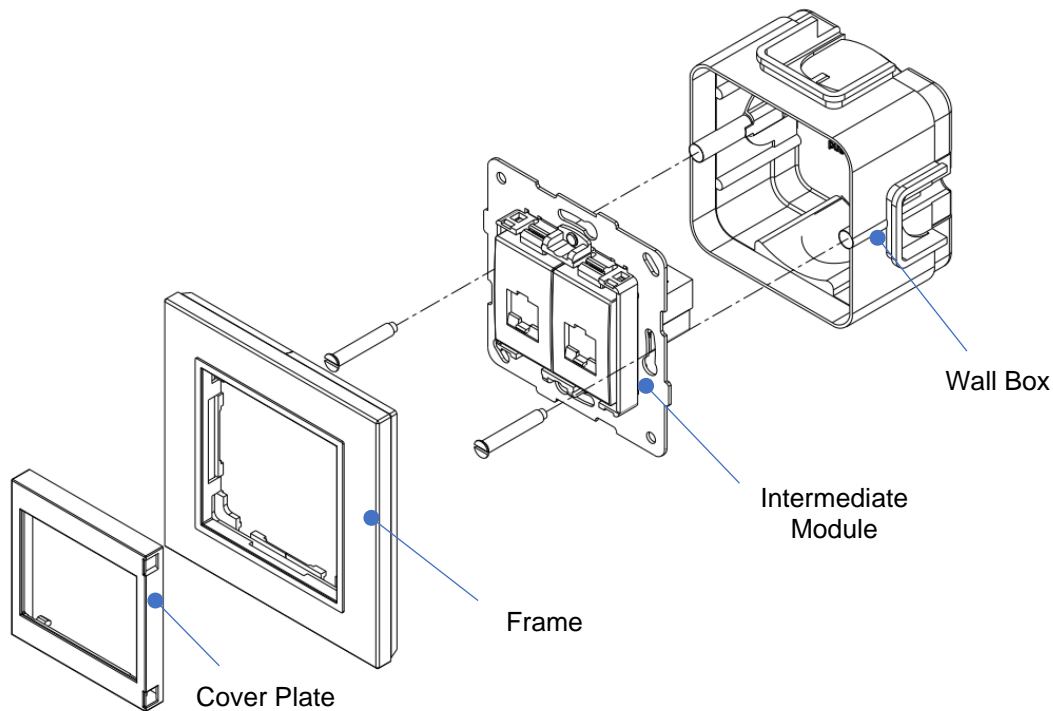
With Lavina '95 Frame: JC1401

- Dimensions: 95x95x10mm (WxHxD)
- Mounting box: >30mm depth
 - J1040, flush mounting, plastic
74.5 x 74.5 x 42mm (W x H x D)
 - M1050, flush mounting, metal
75.5 x 64 x 50mm (W x H x D)

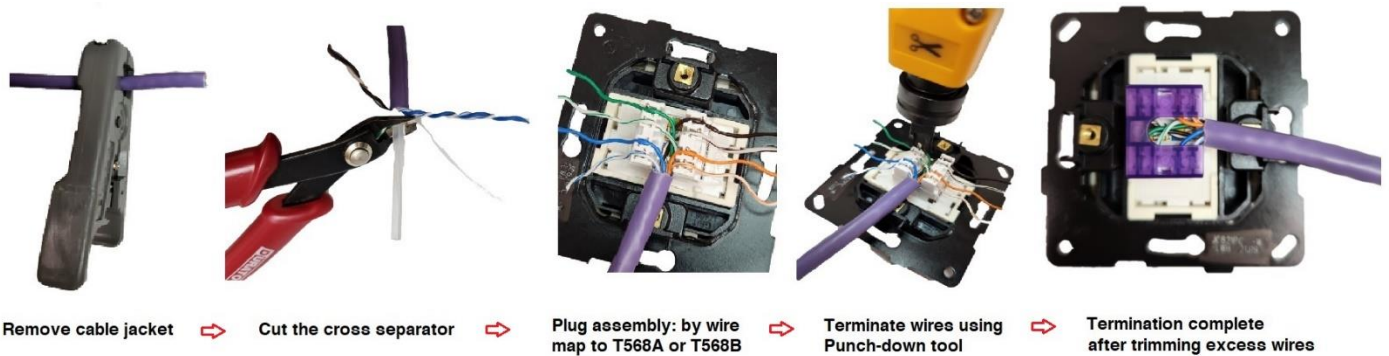


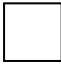

Product dimensions (mm)

Single-gang Assembly



Typical Wiring Guide (for reference)



Product Code	Colour
JC822PC -W-LWH	 Matt White
JC822PC-W-LBL	 Matt Black
<i>For other colours, please contact T&J Sales representative</i>	